

ai-studio | arquitectura
interiorismo |

SUMMARY

THE TEAM 1

RESIDENTIAL & YACHT 2

HEALTHCARE 20

OFFICES & STORES 30

HOTELS 38

THE TEAM

ANDREA GUILARTE | Graduated in Architecture at University of Santa Cruz de la Sierra. Master in Project Management at La Salle University. Master in Architecture at Polytechnic University of Barcelona (UPC).

ANNA TRILLO | PhD in Urban Design at Polytechnic University of Milan. Graduated in Architecture at University Federico II of Naples. Master in Urban Design at Polytechnic University of Barcelona (UPC).

ai-studio, WAS FOUNDED IN 2013 BY THE ARCHITECTS ANDREA GUILARTE AND ANNA TRILLO. IT IS AN ARCHITECTURE AND INTERIOR DESIGN STUDIO BASED IN BARCELONA THAT STANDS OUT FOR THE QUALITY, THE FUNCTIONALITY, THE SUSTAINABILITY, THE DETAILED APPROACH AND THE TECHNICAL RESOLUTION OF THE PROJECTS.

WE OFFER A WIDE RANGE OF SERVICES THAT COVER ALL OUR CLIENTS' NEEDS, FROM THE PRIMARY IDEAS THROUGH THE TECHNICAL PROJECT TO THE COMPLETION.

WE COVER DIFFERENT TYPOLOGIES, FROM HOTELS, COMMERCIAL AND RESIDENTIAL PROJECTS TO HEALTHCARE FACILITIES.

WE HAVE A CONSOLIDATED INTERNATIONAL DIMENSION WITH PROJECTS IN MADRID, BARCELONA, PRAGUE, MILAN, TOULOUSE, DUBAI AND PRESENCE IN AMERICA.

IN 2014 WE COMPLETED THE "CLINICA FOIANINI" INTERIOR DESIGN PROJECT IN SANTA CRUZ DE BOLIVIA, WITH A UNIQUE LOOK IN WHICH THE PATIENT FEELS COMFORTABLE.

RESIDENTIAL & YACHT

OUR MISSION IS TO FULFILL THE CLIENT'S NEEDS THROUGH OUR DESIGN, CREATING FUNCTIONAL AND CONTEMPORARY SPACES AND ADAPTING THEM TO EACH CLIENT'S PRIORITIES AND TASTES. WE WANT TO GIVE DIFFERENT SOLUTIONS TO EACH CLIENT, CREATING COMFORTABLE SPACES, ADAPTING THE NEW TECHNICAL SOLUTIONS TO OBTAIN SPACES THAT SHOW EACH CLIENT'S TASTE. WE FIND VERY IMPORTANT COMBINING THE DIFFERENT SOLUTIONS AND MATERIALS WITH A RESPECT TO THE EXISTING MATERIALS AND SPACES, RESTORING SOME OF THESE FEATURES TO HIGHLIGHT THE SOUL OF EACH HOME.

PENTHOUSE S

Refurbishment of apartment in Sitges

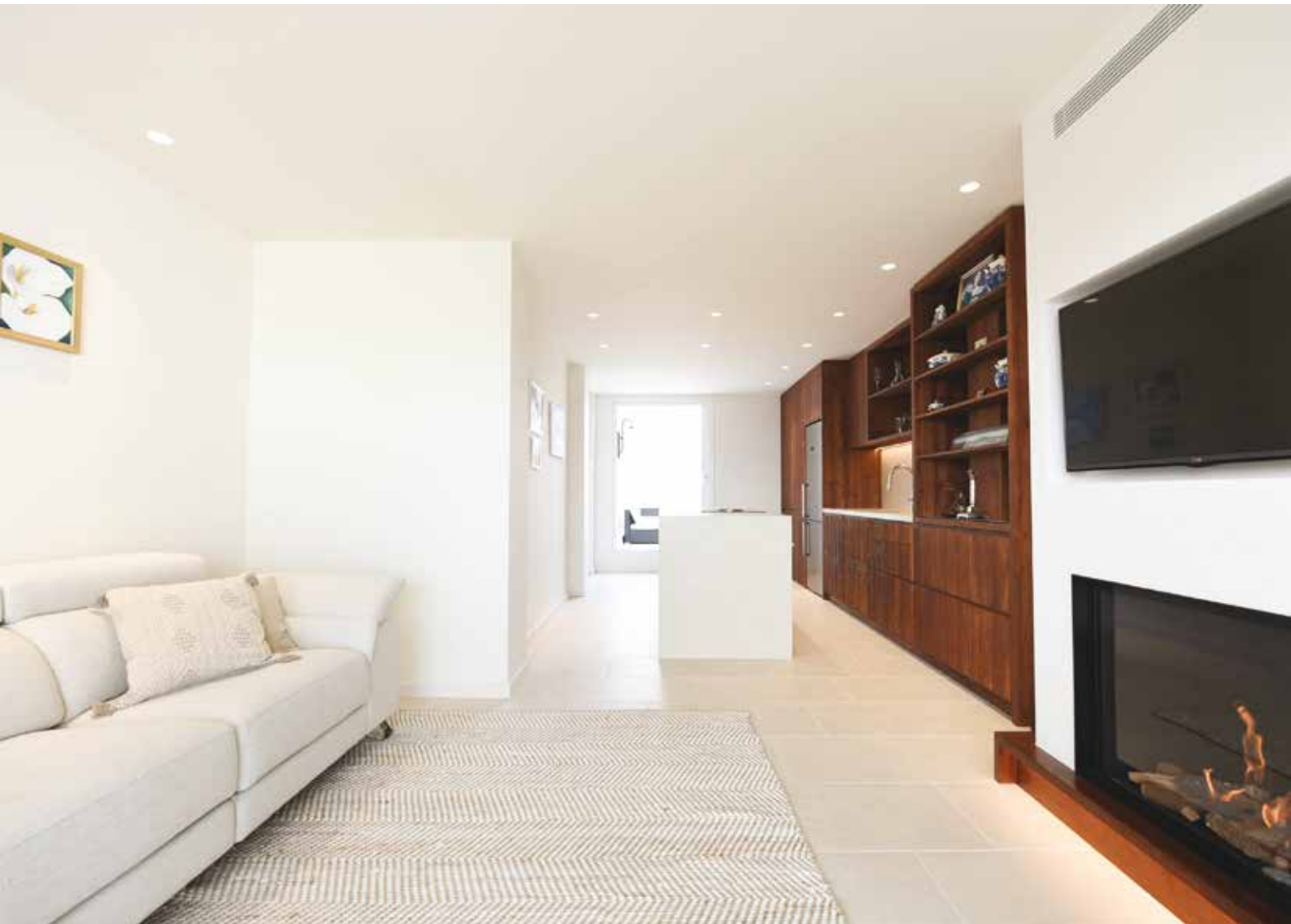
Interior built surface 93 sqm

Terraces surface 72 sqm

Total surface 165 sqm

Project: ai-studio

Photo credit: Angelo Donatiello





Hand-brushed pine wood and warm white tones give this Penthouse a suspended atmosphere between Nordic and Mediterranean.

The kitchen is the open place that unites the two terraces facing the first line of the sea and the mountains, creating a convivial and dynamic spatial continuum.









Sliding panels and integrated doors allow flexible spaces to adapt to the intensity of variable use according to the different occasions, from a weekend as a couple to a meeting of the whole family.

PENTHOUSE L

Refurbishment of apartment in Barcelona

Interior built surface 41 sqm

Terrace surface 13 sqm

Total surface 54 sqm

Project: ai-studio

Photo credit: Angelo Donatiello



The Japanese inspiration, interpreted in the sense of praise of the void that allows the absolute flexibility and adaptability of spaces, is the Concept of this house.

The spatial device that materialises this void is the system of sliding panels, "shoji" made by hand, which fluidly and flexibly articulate the space.



The materiality of the place is expressed through natural and raw finishes: the delicacy and apparent fragility of the rice paper framed by light frames of wenge tinted wood, the texture of the brushed oak parquet, the palette of warm and earthy tones of the microcement and the stuccos.





PENTHOUSE M

**Refurbishment of apartment in the Sants
neighborhood, Barcelona**
90 sqm

Project: **ai-studio**

Photo credit: Angelo Donatiello



A complete renovation of an apartment in the Sants neighbourhood that opens up the spaces letting the natural light fill up the whole apartment.

The starting point was to open up the spaces and fill up with natural light the apartment, with an open and functional kitchen as the main feature and the layout axis as well as the use of materials.







HOUSE B SINGLE-FAMILY HOUSE

**Refurbishment of a single-family house
520 sqm (+ 1,100 garden sqm)**

Project: GCA ARCHITECTS

Collaboration as Project Manager: **ai-studio**

This three-floor house located in the residential neighbourhood of Bonanova was almost completely rebuilt, keeping only the pre-existing façade.

The middle floor is where the main entrance is located, it contains all the social wide-opened spaces, which are in direct connection to the rear garden and swimming pool area, a garden that not only brings the colour contrast to all the clean and bright white concept used in the interior design, but also becomes a natural extension of the interior spaces.

The upper floor contains the rooms' private areas, each of them with private terraces focused always on the garden visuals.

Finally, the first floor was designed for specific family-life spaces such as the tv room, the music room or the kids study-room, with a warmer choice of materials.



NIRVANA SY

53.5 m (175 ft)

Fast Cruising Ketch

Naval architect: DUBOIS NAVAL ARCHITECTS

Interior design: **ai**-studio in collaboration with GCA
ARCHITECTS

Shipyard: VITTERS SHIPYARD

Photo credit: Albert Brunsting, Richard Langton, Ed Holt





Nirvana was awarded the Prix du Design Trophy at the 2008 Monaco Yacht Show and the International Superyacht Society Design Award 2008 in Fort Lauderdale in the category "Best sailing yacht above 40m".

The interior design defines a contemporary and elegant style based on materials that provide warmth, as well as variations of texture and tone. The main challenge was building a luxurious yet comfortable yacht, while maintaining a dynamically flexible relationship between a domestic feeling and high-tech solutions.

Carefully matching fine materials and paying a special attention to details, the design creates unique elements, such as the staircase connecting the living room to the flybridge. Five leather-lined shelves suspended in hardened glass act as a partition between the living room and the dining area.



The uninterrupted continuity of interior and exterior on the main deck is achieved through spatial filters, such as sliding silk panels and fragmented glass screens, which allow for custom configurations of different levels of privacy.





HEALTHCARE

PROJECTS CONCEIVED ON THE BASICS OF ITS PUBLIC USE AND DESIGNED TO INTEGRATE THE COMPANY'S CORPORATE IMAGE, WHERE THE FUNCTIONALITY IS THE MAIN ISSUE SETTING OUR OBJECTIVE IN DESIGNING A COMFORTABLE ENVIRONMENT IN WHICH TO WORK.

WORKERS AS WELL AS PATIENTS MUST FEEL SECURE WHILE IDENTIFYING A CLEAR, WARM AND ORGANIZED SPACE, IN WHICH COLORS, MATERIALS AND LIGHTING ARE CAREFULLY STUDIED.

FOIANINI CLINIC

Private healthcare center, Santa Cruz (Bolivia)

50 private rooms

Restaurant, cafeteria, offices, medical consulting
and treatment rooms

Project: **ai-studio**

Photo credit: **ai-studio**



The new Foianini Clinic, planned for completion in 2015, offers a unique combination of public spaces and private patient rooms bathed by natural light.

The association of the light grey wood of the furniture and the carefully selected palette of wallpapers and upholstery creates a relaxed and comfortable atmosphere for the patients.





Visible from the street, an impressive double height hall entrance creates a strong link between the city and the new building, contrasting with the traditional image of inward looking hospital environments.







PLANAS CLINICAL CENTER

Aesthetic clinical center, Madrid

780 sqm

12 cabins, meeting rooms, offices

Project: GCA ARCHITECTS

Collaboration as Project Leader: **ai-studio**

Photo credit: Jordi Miralles



Aesthetic clinical center located in the heart of Madrid, articulated on two floors, including waiting rooms, offices, medical offices and treatment booths with different levels of specialization.

The interior design aims to visualize the client's vision, which summarizes the values of technology, quality and research.

A light oak wood with a silver gray hpl has been combined, articulating sets of volumes through the careful use of indirect lighting and RGB lighting lines, creating an atmosphere that is both relaxing and revitalizing.



SAURINAS CLINICAL CENTER

Aesthetic clinical center, Barcelona

1.450 sqm

20 cabins, meeting rooms, offices, training center

Project: GCA ARCHITECTS

Collaboration as Project Leader: ai-studio

Photo credit: Jordi Miralles

Aesthetic clinical center located in the heart of the Eixample neighborhood, articulated on three floors: a ground floor with shop, personalized attention and treatment booths, a first floor with hairdresser, and a basement that functions as a training center. The interiors combine etched glass, clean and reflective, with dark woods, brushed brass and an anthracite gray micro-cement floor. Lighting is prevalently indirect. In this way an intimate and elegant atmosphere is created, able to favor the relaxation of the clients.





OFFICES & STORES

OUR MISSION IS TO DESIGN A SPACE CONCEPT THAT REFLECTS THE SPECIFIC REQUIREMENTS OF THE FUNCTIONAL PROGRAM OF THE CLIENT AND FUTURE USERS.

WE WORK THE CORPORATE IDENTITY AND REFLECT IT INTO THE SPACES THROUGH COLORS, GRAPHIC DESIGN AND SIGNPOSTING. WE FIND VERY IMPORTANT THE FLEXIBILITY OF SPACES, CREATING OPEN SPACES FOR DIFFERENT USES, ADAPTING OFFICE SPACES TO NEW WORKING AREAS IN WHICH ACOUSTIC AND LIGHTING COMFORT ARE ESSENTIAL.

MARFEEL OFFICES

**Interior Design of Meeting rooms and Creation
and Design of Private Booths, Barcelona**

Interior design: **ai-studio**

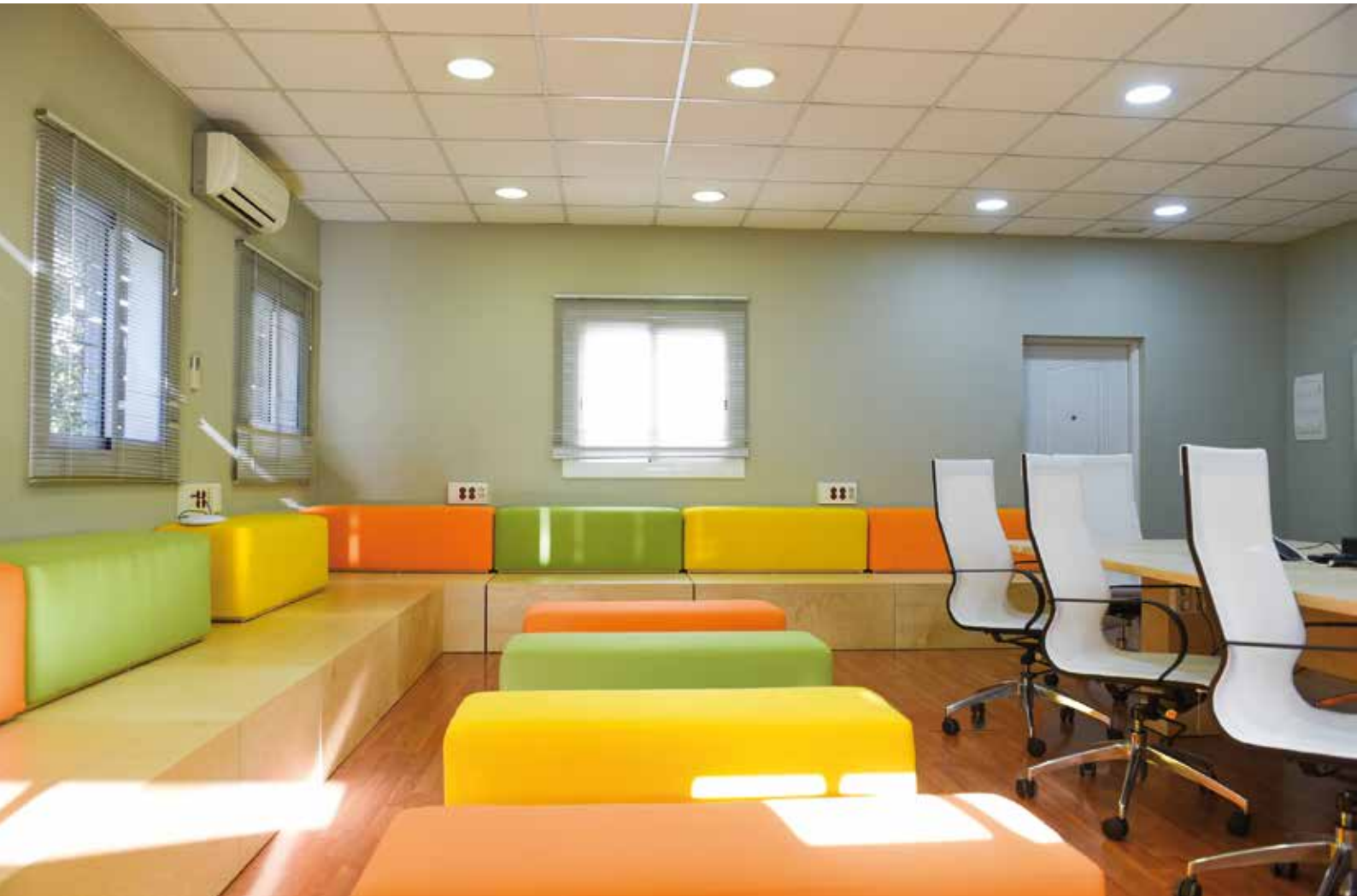
Photo credit: Angelo Donatiello



The project consists on two interventions to adapt two meeting rooms to a different use.

The client needed a multipurpose hall with a lot of seats and some booths where private calls could be held.

The proposal uses the corporate colors and sound-absorbing materials to give give the image according to a new company and give response to the user's needs.





MYRURGIA OFFICES

Interior Design of an office building, Barcelona
4.200 sqm

Offices, meeting rooms, auditorium

Project: GCA ARCHITECTS

Collaboration as Project Manager: **ai-studio**

Photo credit: Jordi Miralles

A Complete interior renovation of an old factory to adapt it to its new use as an office building, to house the company's headquarters and to promote its new image. This renovation includes two floors with wide-open, spacious, working-spaces. The main entrance remains it's original image with a marble steel staircase situated around it, and then, behind the reception the new modern offices appear.

The general concept is a diaphanous space, reinforced with natural and artificial lighting. The partition without mullions and glass screens allows visual communications between different spaces, having also privacy where it's necessary.





PASTRY SHOP

Oriol Balaguer, Barcelona

45 sqm

Project: GCA ARCHITECTS

Collaboration as Project Leader: **ai-studio**

Photo credit: Jordi Miralles

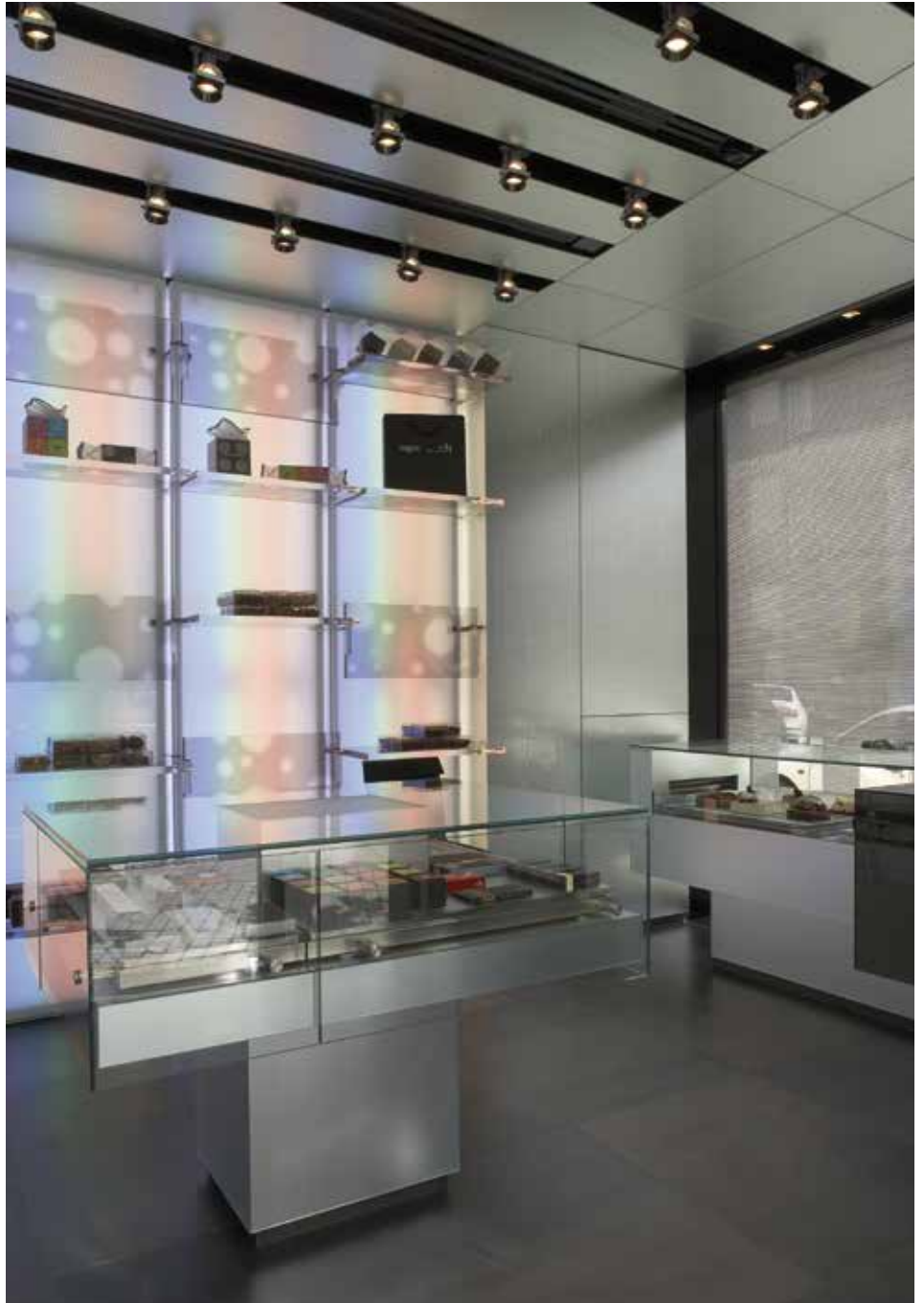


The interior design defines a contemporary and flexible space where the absence of counters allows customers to move freely.

The space is conceived as a glass box wrapped with silk-screened pearlescent mirror offering an alternative perception of the product in which images and colours are constantly mixed.

Sculptural pieces extruding from the floor and the walls become product displays and counters.

A back lighted display with methacrylate pivoting trays allows for custom configurations of the merchandise and the creation of differing atmospheres of colour.



HOTELS

OUR MISSION IS TO DESIGN A SPACE CONCEPT THAT REFLECTS THE SPECIFIC REQUIREMENTS OF THE FUNCTIONAL PROGRAM OF THE CLIENT AND FUTURE USERS. AT THE SAME TIME, WE CONCEIVE A SPACE THAT CAN REMAIN FLEXIBLE, ADAPTABLE TO FUTURE CUSTOMER REQUIREMENTS, AND THAT ALWAYS TAKES INTO ACCOUNT THE DURABILITY AND MAINTENANCE REQUIREMENTS THAT ARE ESSENTIAL IN THIS TYPOLOGY. THROUGH CONSTANT RESEARCH INTO NEW CONSTRUCTIVE SOLUTIONS AND CAREFUL FINISHING AND LIGHTING, WE PROPOSE SPACES THAT REFLECT THE IDENTITY OF THE CLIENT WHILE MAINTAINING A TIMELESS ATMOSPHERE.

CATEDRAL HOTEL

4 Star Urban Hotel, Barcelona

80 rooms

Restaurant, meeting rooms, chill-out terrace

Project: GCA ARCHITECTS

Collaboration as Project Leader: **ai-studio**

Photo credit: Jordi Miralles

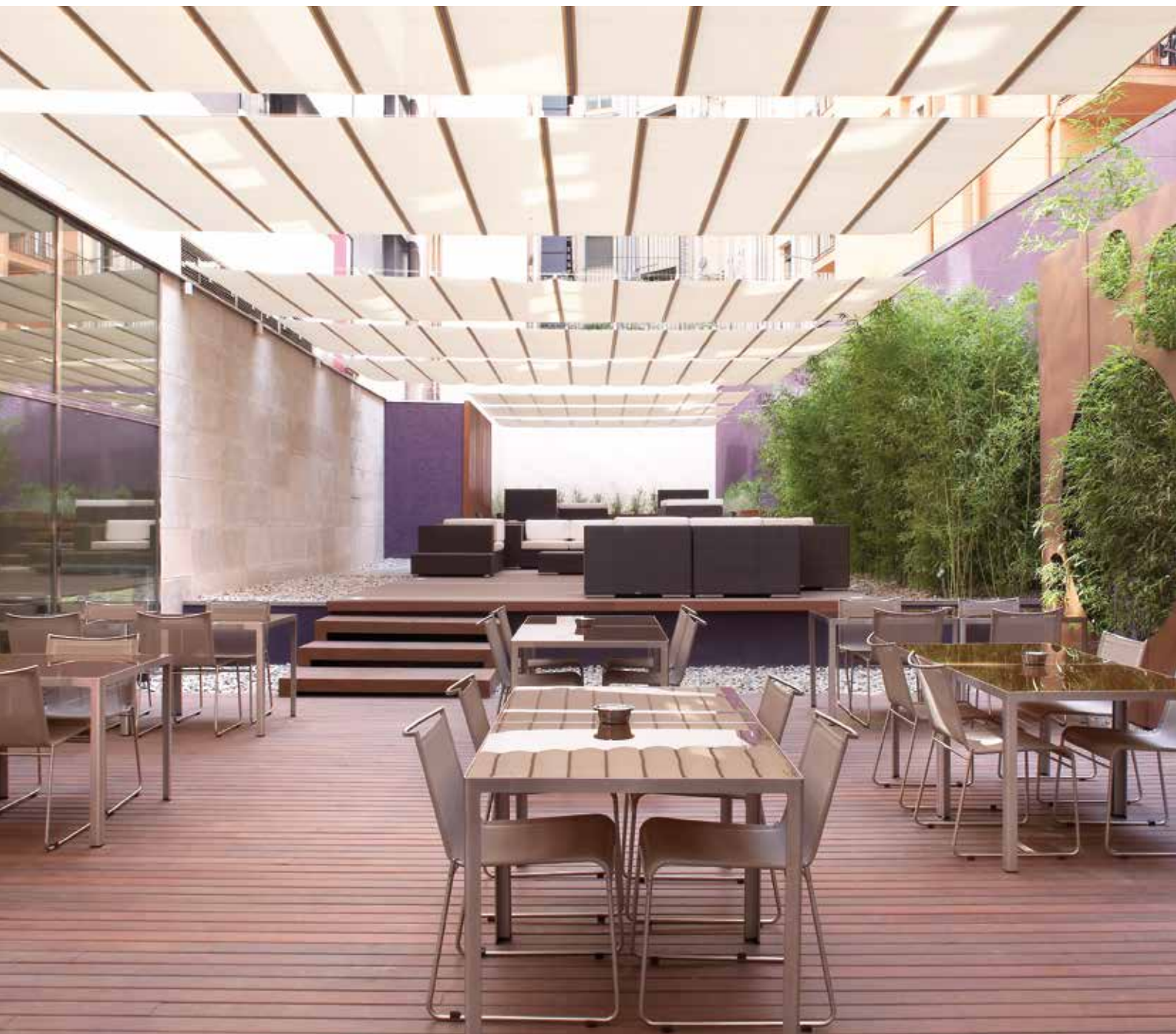


The interior design of this Hotel, located in a new building in the historic centre of Barcelona, defines a contemporary and refined style based on the combination of precious materials such as the silver leaf stucco with fresh colours as light green, grey and silver nuances.

The horizontal lines of the furniture in light oak create on the ground floor a relaxed and continuous space where the guest can circulate freely.

Visible from the street, an exclusive chill-out terrace in the interior courtyard of the building is defined by a sequence of wooden platforms framed by Corten steel panels and vegetal screens of lush bamboo.





OLIVIA PLAZA HOTEL

4 Star Boutique Hotel, Barcelona

80 rooms

Restaurant, meeting rooms, terrace

Project: GCA ARCHITECTS

Collaboration as Project Leader: **ai-studio**

Photo credit: Jordi Miralles

The result of the conversion of an office building into a Hotel, the interior design keeps the visual connection between Plaza Catalunya to the

spectacular setting of the internal courtyard overlooking the apse of the Romanesque church of Santa Anna. Combining a linear layout with a vertical development of the common areas articulated in a ground floor and a mezzanine.

The interior design of the rooms, offering a combination of comfort and flexibility, is based on a vivid colour palette and a close attention to details such as the system of red lacquered sliding panels between the washbasin area and the bedroom that allows for differing levels of privacy.





SKI RESORT

5 Star Resort Hotel, Baqueira

120 rooms

Restaurant, commercial zone, spa

Project: GCA ARCHITECTS

Collaboration as Project Leader: **ai-studio**

Photo credit: Jordi Miralles

At the heart of the Catalan Pyrenees, the interior design of this Resort defines the concept of a truly contemporary mountain chalet.

Inspired by the spectacular setting of the mountains, the dramatic décor is based on a warm palette of finishes including natural oak, slate, bare metal and cowhide.

The guest rooms with steeply pitched ceilings and natural materials create a warm and comfortable space where the guest can relax after practising adventure sports.

The common areas include a restaurant display cooking with three dining areas, a SPA and a commercial zone accessible from a separate lobby in the lower floor.





CITIZ HOTEL

4 Star Boutique Hotel, Toulouse

64 rooms

Tea room, seminar, meeting rooms

Project: GCA ARCHITECTS

Collaboration as Project Leader: **ai-studio**

Acknowledgements: David Bilsfeld, GCA ARCHITECTS

Photo credit: Citiz Hotel

At heart of this restoration of a listed building in the historical centre of Toulouse, the interior design defines an elegant style inspired by the dominant pink color of the town. The mauve tone is the leitmotiv of the hotel decoration in the rooms and the public areas.

The combination of precious materials such as velvet fabrics and gold lamps with industrial finishing as the glass and the natural iron, establishes a dynamic relationship between the historical atmosphere of the building and the contemporary personality of an urban hotel.







On the ground floor a cosy and relaxed Tea Room allows the guest to relax whilst keeping a visual connection with the city life thanks to the full-height glass openings in the façade.



ai-studio

c/ Sant Gabriel 22, local | 08012 BARCELONA | SPAIN
PHONE: +34 619172920 | +34 667884153
ai-studio@ai-studio.es | www.ai-studio.es